

SBA

SMART BUILDINGS ALLIANCE
for SMART CITIES



SBA provides support to the building industry, helping it to quickly adapt to the changes arising from the wide-spread introduction of digital technology in the Smart Building and the Smart City. It offers a global view shared by pooled infrastructures to promote new services, focussing on uses, that generate efficiency and better social cohesion.

SBA's ACTIONS

▶ MEETINGS

Bringing the industry together in a spirit of transversality

SBA events, for sharing experiences and keeping track, with topics on smart buildings in a sustainable city.

▶ PUBLICATIONS

Share our vision and our recommendations

The Smart Building for Sustainable Territories Manifesto. The Ready2Services Building and Territory Guide.

▶ COMMITTEES

Considering the building's evolution in the smart city

"Expert" committees to define a common framework for buildings that are open and connected.

▶ RELATIONS WITH INSTITUTIONS

Raising the awareness of public policymakers

Ministries, public bodies, local government, professional organisations, etc.

▶ INTERNATIONAL COOPERATION

Cross-border relations

Discussions with international organisations.

**BECOME AN SBA MEMBER
ALONGSIDE THE SMART BUILDING
SECTOR'S LEADERS AND EXPERTS
AND...**

- ▶ Learn about the issues and the challenges
- ▶ Take part in defining and setting up baseline references
- ▶ Find out about and follow innovations in the sector
- ▶ Build a network and talk with your peers
- ▶ Meet experts from business areas related to yours

**THE SMART BUILDINGS ALLIANCE
IS THERE FOR YOU - CONTACT US**

www.smartbuildingsalliance.org

contact@smartbuildingsalliance.org

THE COMMITTEES

Smart Buildings for Smart Cities

Defines reference models to foster the links of interdependence and cooperation between Connected Buildings and a Connected Territory.

Services for Users of Smart Buildings & Territories

Leverages the Ready2Services framework to define the conditions to develop flexible and scalable user services, from one buildings to a whole territory. Defines the interest of the Ready2Services reference framework for scalable & multiple services around Smart Buildings & Territories by pooling equipment and infrastructure.

Positive Energy Buildings & Territories

Rethinks Connected Buildings and Territories in terms of an energy mix (centralized and decentralized / Carbon and carbon free).

New Business Models

Evaluates innovative new business models that contribute to shifting the value from "asset management" to "service management"

Ready2Grids

Defines the role of a smart building within a smart grid & the conditions necessary to become an active contributor to the smart grid.

Ready2Services

Defines the technical conditions for a Building to be qualified as Open & Connected. Ready2Services has the ambition to become the industry reference label for Smart Buildings. It promotes Open Standards and defines the connectivity and security conditions for Smart Buildings on 3 different and independent layers: Sensors & Actuators / Infrastructures / Cloud Application.

Connected Buildings & Territories

Promotes the use of digital tools such as BIM in the global lifecycle of buildings and territories. Studies impact on data management, and paves the way to defining Smart Data strategies.

Innovative & Disruptive Technologies

Identifies promising new technologies and evaluates potential impact on future services, business models...

And also the committees:

Institutions • Supports policy makers in their understanding of the digital transition of the building industry and local government.

Marketing • Promotes the Smart Buildings Alliance for Smart Cities initiatives, ideas & key deliverables to a broad audience of stakeholders from industry insiders to the general public.

And many others • Cyber security, Health & Well-being, Hospitality, Mobility as a Service, Networks and Protocols, Robotics, Safe City, Social Housing...

■ Services and business models

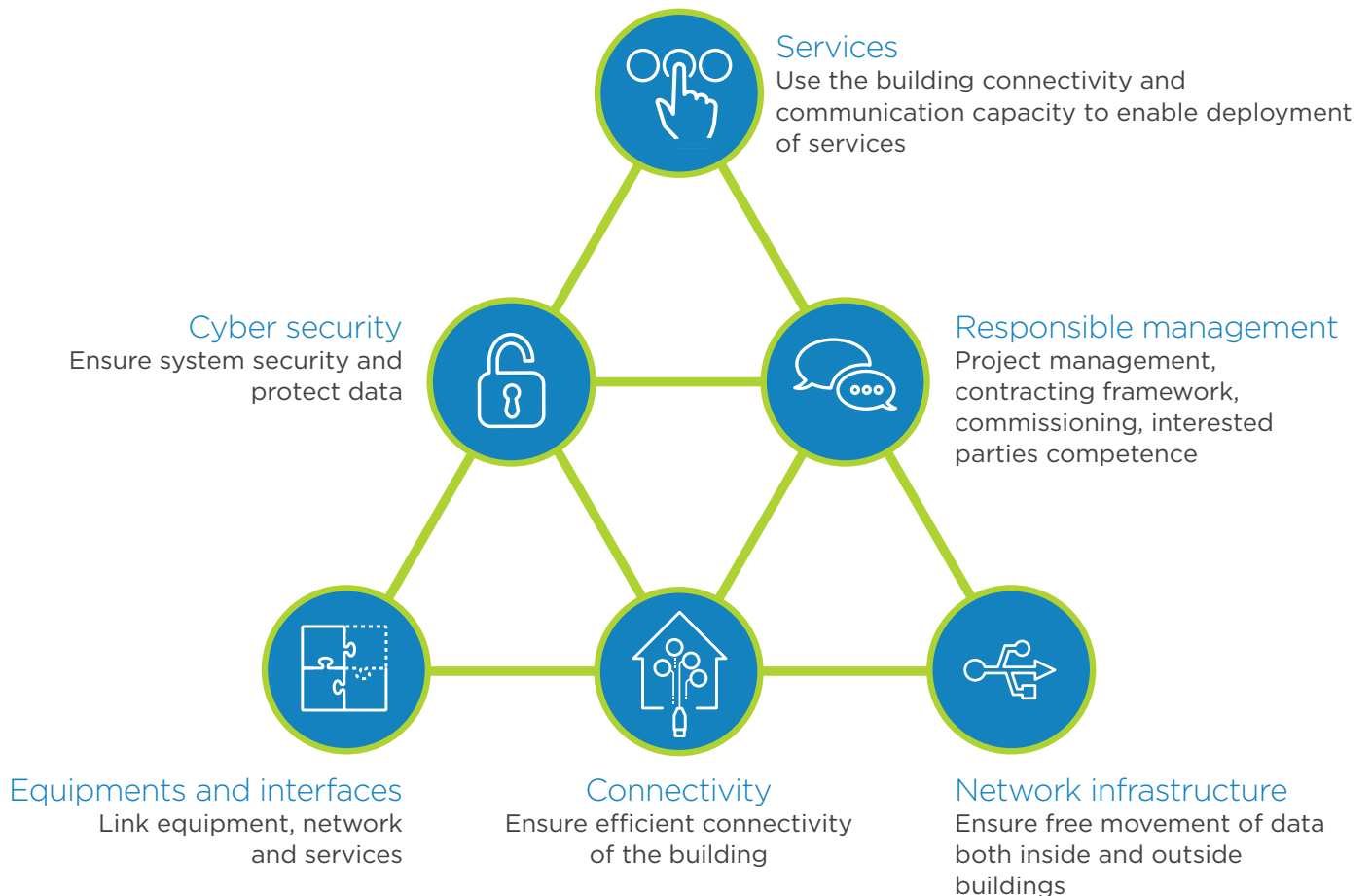
■ Underlying techniques & frameworks

R2S A LABEL FOR CONNECTED AND COMMUNICATING BUILDINGS

MAIN PRINCIPLES

3 independent layers	Equipment, Infrastructure & Services are 3 independent layers that must be separable
Systems interoperability	Use of Web Services and Open APIs to facilitate communication between independent 3 rd party solutions
Building Network based on IP	An IP-based (Internet Protocol network to transport data, the buildings "4 th fluid"
Open access to data	Interfaces allowing control and information functions to be accessible both inside and outside buildings
Security	Data protection, resiliency, IT & Network security

READY2SERVICES FRAMEWORK



THE HONORARY MEMBERS



THE MEMBERS

ABB ● ACCENTA ● ACCOR INVEST ● ACOME ● ACR ● ACS2I ● ACTIWATT ● ADEUNIS RF ● AIRELIOR FACILITY MANAGEMENT ● AIRRIA ● ALIAXIS ● ALLIANZ REAL ESTATE FRANCE ● ALPHA RLH ● ALTAREA COGEDIM ● ALTECA ● ALTECON ● AN2V ● ANC TECHS ● APILOG AUTOMATION ● ARC INFORMATIQUE ● ARCHIMEN ● ARCOM ENERGIE SERVICE ● ARISTOTE ● ARKHENSPACES ● ARP ASTRANCE ● ARTELIA ● ASCAUDIT ● ASSOCIATION HQE ● ASSYSTEM ● ATC FRANCE ● AURI ZONE ● AVIDSEN ● AXIANS ● AZUR SOFT ● B.TIB ● BAALBEK MANAGEMENT ● BARBANEL ● BCM ENERGY ● BEEBRYTE ● BIRDZ ● BNP PARIBAS REAL ESTATE ● BORDEAUX METROPOLE ● BOUYGUES CONSTRUCTION ● BOUYGUES ENERGIES & SERVICES ● BOUYGUES IMMOBILIER ● CABA ● CAILLOU VERT CONSEIL ● CAISSE DES DEPOTS ● CAPENERGIES ● CCF ● CCI NICE COTE D'AZUR ● CDU IMMOBILIER ● CEA TECH ● CERTIVEA ● CISCO ● CIT RED ● CITYLITY ● CLUSTER HBI ● CONNEK+ CONSEIL ● CONSEIL DE DEVELOPPEMENT METROPOLE DE LYON ● COSTE ARCHITECTURES ● COTHERM ● CSTB ● CYMBIO ● CYRISEA ● DALKIA - GROUPE EDF ● DASSAULT SYSTEMES ● DATA SOLUCE ● DECAYEUX ● DECELECT ● DELTA DORE ● DEMATHIEU & BARD ● DISTECH CONTROLS ● DOVOP DÉVELOPPEMENT ● E.ON ● E'NERGYS ● EASY SMART BUILDING ● ECONOCOM ● EDF - BRANCHE COMMERCE ● EDF OPTIMAL SOLUTIONS ● EFFIPILOT ● EIFFAGE ENERGIE ● ELITHIS ● EMBIX ● ENERGISME ● ENGIE ● ENGIE AXIMA ● ENGIE INEO ● ENLIGHTED ● ENOCEAN ● ENSI POITIERS ● FAYAT ENERGIE SERVICES ● FFDOMOTIQUE ● FIFTHPLAY ● FONCIERE DES REGIONS ● GA2B ● GEMALTO ● GETEO ● GETRALINE ● GFI INFORMATIQUE ● GLI - GROUPE EKIU ● GRAND PARIS HABITAT ● GRDF ● GREENERWAVE ● GROUPE BETOM - IDEAM SOLUTIONS ● HAGER ● HAVR ● HENT CONSULTING ● HESTIA INNOV ● HONEYWELL ● HXPRIENCE ● HYDRELIS ● IBM ● ICADE ● ICONICS ● IDEX ● IMMOBILIÈRE 3F ● IMPERIHOM ● INEX ● INGETEL BET ● INNOVATION PLASTURGIE COMPOSITES ● INSITEO ● INTENT TECHNOLOGIES ● IP2I ● IPORTA ● ISTA ● KALIMA DB ● KARDHAM CONNECT ● KOONTOO ● KORUS ● L'IMMOBILIERE IDF ● LEGRAND ● LEON GROSSE ● LM INGENIERIE ● LONMARK FRANCE ● LUTRON ELECTRONICS ● LUXENDI ● MBA INGENIERIE ● MCS SOLUTIONS ● MEDIACONSTRUCT ● MICROSENS ● MIOS ● NEOBUILD ● NETATMO ● NETISSE ● NEXITY ● NEXTDOOR ● NOVAL ● NXP ● OCCITALINE ● OGER INTERNATIONAL ● OGGA ● ORANGE ● OVERKIZ ● OYA LIGHT ● OZE ENERGIES ● PARTAGER LA VILLE ● PHILIPS LIGHTING ● PICHET ● PLAN BATIMENT DURABLE ● POLE TES ● POLESTAR ● PRIVA ● PROMOTELEC SERVICES ● PROXISERVE ● QARNOT COMPUTING ● QOS SOLUTIONS ● QUALITEL ● QUINTEA ● RABOT DUTILLEUL - NACARAT ● RENESAS ● RESOLVING ● REXEL ● S2I COURANT FAIBLE ● SANTECH ● SCHNEIDER ELECTRIC ● SE3M ● SEMERU ● SEMTECH ● SERCE ● SFEL ● SFR ● SIBCO ● SIEMENS ● SIRLAN ● SLAT ● SMART CUBE ● SMART USE ● SMARTENON ● SMARTHAB ● SNACG ● SNEF CONNECT ● SOMFY ● SPIE ● SPIE BATIGNOLLES ● SPINALCOM ● SPL LYON CONFLUENCE ● STUDINNOV ● SXD ● SYLFEN ● SYSTECHMAR ● TECHNAL ● TECHNOLOG ● TEVOLYS ● TRIDONIC ● TRIO2SYS ● UBIANT ● ULIS ● UNIBAIL-RODAMCO ● UNIVERSITE DE RENNES 1 ● URBAN PRACTICES ● URBEST ● VALLOGIS ● VEOLIA ● VERTUOZ BY ENGIE ● VINCI ENERGIES FRANCE ● VINCI FACILITIES ● WAGO ● WEBINAGE ● WICONA ● WISEBIM ● WIT ● Z#BRE ● ZEPLUG

www.smartbuildingsalliance.org ● contact@smartbuildingsalliance.org

[#SBA_France](https://twitter.com/SBA_France) [in](https://www.linkedin.com/company/sba-smart-buildings-alliance) SBA - Smart Buildings Alliance for Smart Cities